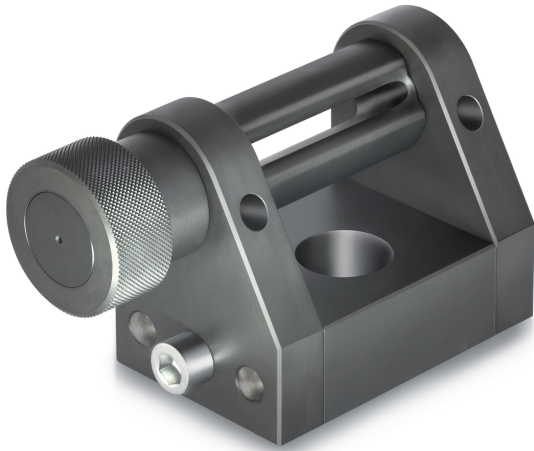


KERN AD 9256

KERN

Belt tension clamp



Category

Brand	Sauter
Product category	Clamp
Product group	Strip tension clamp

Construction

Dimensions completely mounted (W×D×H)	181×100×78 mm
Material	steel
Mounting - force dissipation	External thread M12 External thread M18 × 1,5 External thread M18
Tensile/compressive force [Max]	50 kN
Maximum clamp width	80 mm

Environmental conditions

Storage temperature [Min]	-10 °C
Storage temperature [Max]	40 °C

Packing & Shipping

Readability force [d] (N)	14 d
Dimensions packaging (W×D×H)	181×100×78 mm
Net weight	4,5 kg
Shipping method	Parcel service
Net weight approx.	4,6 kg
Gross weight approx.	4,6 kg
Shipping weight	4,5 kg

Pictograms