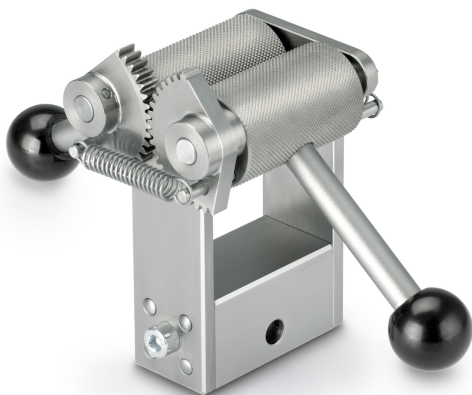


# KERN AD 9200

Roller tension clamp up to 5 kN

**KERN**



## Category

Brand	Sauter
Product category	Clamp
Product group	Roller tension clamp

## Construction

Dimensions completely mounted (W×D×H)	190×97×96 mm
Material	aluminium
Mounting - force dissipation	Threaded hole M6 External thread M12
Tensile/compressive force [Max]	5 kN
Maximum clamp width	50 mm
Clamping width	15 mm

## Environmental conditions

Storage temperature [Min]	-10 °C
Storage temperature [Max]	40 °C

## Packing & Shipping

Readability force [d] (N)	14 d
Dimensions packaging (W×D×H)	190×97×96 mm
Net weight	3 kg
Shipping method	Parcel service
Net weight approx.	3,0 kg
Gross weight approx.	3,0 kg
Shipping weight	3 kg

## Pictograms