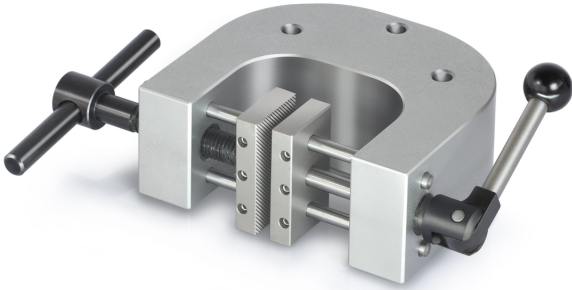


# KERN AD 9052

**KERN**

Screw-in clamp 5 kN, scope of delivery: 2 pieces



## Category

|                  |                     |
|------------------|---------------------|
| Brand            | Sauter              |
| Product category | Clamp               |
| Product group    | Screw tension clamp |

## Construction

|                                       |   |
|---------------------------------------|---|
| Dimensions completely mounted (W×D×H) | 338×145×70 mm                           |
| Material                              | aluminium                               |
| Mounting - force dissipation          | Threaded hole M6<br>External thread M12 |
| Tensile/compressive force [Max]       | 5 kN                                    |
| Clamping width                        | 52 mm                                   |

## Environmental conditions

|                           |        |
|---------------------------|--------|
| Storage temperature [Min] | -10 °C |
| Storage temperature [Max] | 40 °C  |

## Packing & Shipping

|                              |                |
|------------------------------|----------------|
| Readability force [d] (N)    | 14 d           |
| Dimensions packaging (W×D×H) | 338×145×70 mm  |
| Net weight                   | 2,6 kg         |
| Shipping method              | Parcel service |
| Net weight approx.           | 2,6 kg         |
| Gross weight approx.         | 2,6 kg         |
| Shipping weight              | 2,6 kg         |

## Pictograms