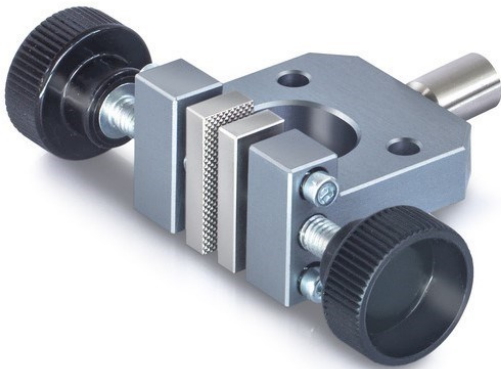


KERN AD 9005

KERN

Screw Tension Clamp for laboratory tensile force measurements incl. jaws with pyramid grip



Category

Brand	Sauter
Product category	Clamp
Product group	Screw tension clamp

Construction

Dimensions completely mounted (W×D×H)	82×40×25 mm
Material	aluminium
Mounting - force dissipation	Threaded hole M6
Tensile/compressive force [Max]	400 N
Maximum clamp width	100 mm
Clamping width	8 mm

Environmental conditions

Storage temperature [Min]	-10 °C
Storage temperature [Max]	40 °C

Packing & Shipping

Readability force [d] (N)	14 d
Dimensions packaging (W×D×H)	82×40×25 mm
Net weight	0,08 kg
Shipping method	Parcel service
Net weight approx.	0,10 kg
Gross weight approx.	0,10 kg
Shipping weight	0,1 kg

Pictograms